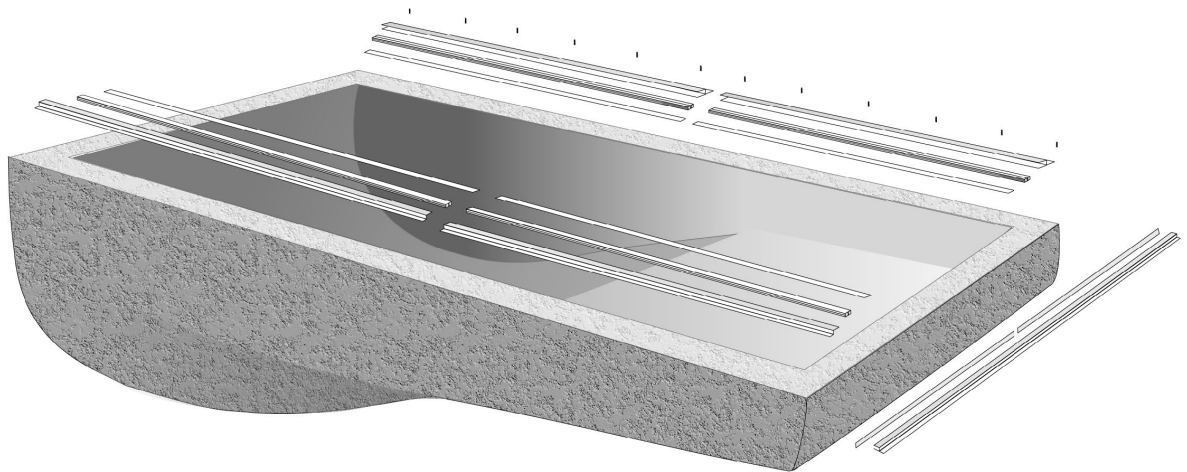


L9642

Encapsulation for Fiberglass Pools and Pool in Pool

Installation Guide



Installation Guide

for Fiberglass Pools and
Pool in Pool Encapsulation

Table of Contents

Fiberglass Pool Encapsulation		Pool in Pool Encapsulation	
Parts List	2	Parts List	4
Kits	2	Kits	4
Tools Required.....	2	Installation Instructions.....	4
Installation Instructions.....	3		

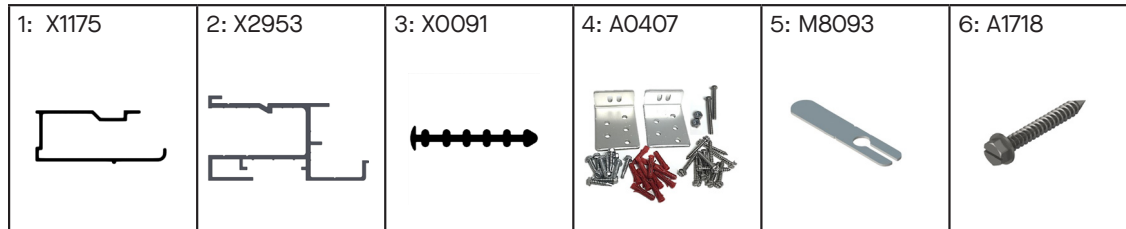
Important Safety Instructions:

WARNING! READ AND FOLLOW ALL INSTRUCTIONS

- Installation shall only be performed by a pool installation technician. Improper installation could lead to bodily harm and failure of the components. Electrical conduit and lines shall be installed by a certified electrician.
- Proper protective equipment should always be worn for installation.
- Follow all tool manufacture safety guidelines and use safe tool practices.
- File any exposed sharp edges. Failure to do so could lead to injury.

Parts List

The encapsulation kit for Fiberglass Pools includes encapsulation for both sides of the pool and the end wall (individual parts shown below). These kits can be used with the reusable coping forming kits, clip on rounded coping, or a brick or stone coping.



Piece	Part Number	Description	Quantity
1	X1175	Encapsulation filler piece, 10ft length	Varies by kit
2	X2953	Fiberglass Encapsulation 21 ft length	Varies by kit
3	X0091	Spacer Shim for Encapsulation for VL & FG	Varies by kit
4	A0407	Encapsulated UT Guide Retainer Kit	Varies by kit
5	M8093	Encapsulation Flat Plate Splice	Varies by kit
6	A1718	12 pack slotted hex head #12 screw 1-1/5" long	Varies by kit

Encapsulation Kits for Fiberglass Pools

A6036	12' x 24'
A6038	16' x 32'
A6040	16' x 40'

Tools Required

- Metal Cutting Saw
- Hammer drill w/ 1/4" masonry bit.
- Cordless drill w/ #3 phillips bit.

Step-by-Step Installation Instructions



Square The Pool

Run string lines around the pool to create a perfectly rectangular pool. Measure widths, lengths and diagonals before securing the encapsulation to the pool wall.



Begin in the Corners

Use a mitre saw to cut two lengths of encapsulation on a 45 degree angle. Bring the cut ends together to form a 90 degree corner. Secure the encapsulation to the pool using the screws provided.

Tip: Install track and spacer in the encapsulation to help the encapsulation and corners line up straight while it is being secured to the pool wall.



Place The Encapsulation

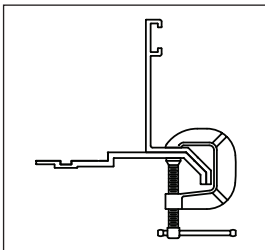
Continue installing the encapsulation around the perimeter of the pool. At the mechanism end, extend the encapsulation 1 inch past the inside edge of the cover housing.



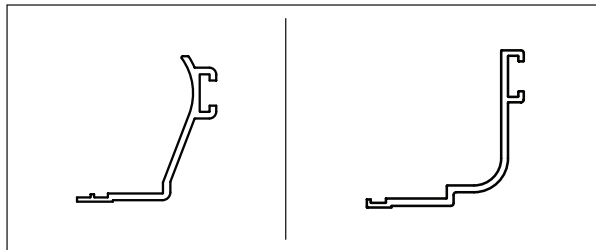
Metal Filler

The metal filler piece is used to cover the track channel in the encapsulation at the shallow end of the pool. After measuring and cutting the metal filler to the correct length, use a rubber mallet to tap them into position.

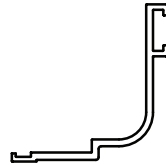
Reusable Coping Forms



Cantilever 2 pc.



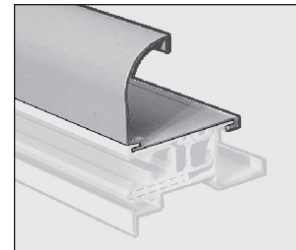
Inclined 1 pc.



Cantilever 1 pc.

Easy to use, one or two piece reusable forms are inserted into the encapsulation and held in place with a temporary spacer. After the deck is formed and cured, the spacers and the forms can be removed and cleaned for the next use.

Clip-on Coping



Compatible with Standard Vinyl Liner and Fiberglass Encapsulation. Permanent clip-on coping available in a rounded shape.

Pool-in-Pool Encapsulation Kits — For All Types Of Non-Rectangular Pools

The Pool-in-Pool cover guide encapsulation kits allow builders to cover almost any freeform pool with an automatic cover. The basic idea behind the Pool-in-pool concept is to create a rectangular step down area around the freeform shape of the pool. The step can be formed using either clip-on coping, reusable forms or paver coping.

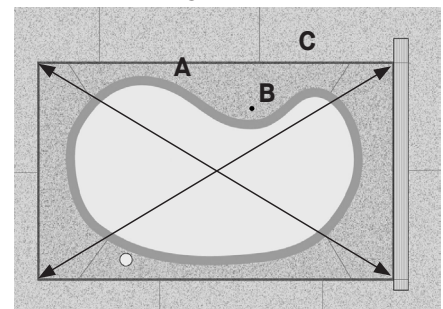


Piece	Part Number	Description	Quantity
1	X1175	Encapsulation filler piece, 10ft length	Varies by kit
2	X2953	Fiberglass Encapsulation 21 ft length	Varies by kit
3	X0091	Spacer Shim for Encapsulation for VL & FG	Varies by kit
4	A0407	Encapsulated UT Guide Retainer Kit	Varies by kit
5	M8093	Encapsulation Flat Plate Splice	Varies by kit
6	A1705	60 pk- Concrete Anchor for #12 Screw	Varies by kit
7	A1707	30 pk - #12 1-1/2" Slotted, Hex Washer Head Screw	Varies by kit

Pool-in-Pool Encapsulation Kits

A6034	20' x 40'
A6035	22' x 50'

Deck Step Diagram



Installation Steps

1. Pour the lower deck area around the pool first and let it cure. The rectangular perimeter of the lower deck (A, deck step diagram) should be completely level and flat for mounting the Pool-in-Pool cover guide encapsulation. The deck from the inside of the perimeter (B) should slope slightly toward the pool for water runoff. Large areas of deck in the lower deck area should have a drain.
2. Place the Pool-in-Pool encapsulation on the level and flat deck perimeter. Be sure that diagonals, width and length measurements are equal and square to each other.
3. Fasten the encapsulation to the decking using the mounting screws and anchors.
4. Insert clip-on coping or reusable deck forms into the encapsulation.
5. Pour the outer concrete step (C).

Questions?

For questions about this installation guide,
contact your local distributor.

L9642 - Rev. 2 - 03/2026



latham
The Pool Company™