

Procedure for Re-Engaging a Misaligned Double Dog Gear

In some cases, the Double Dog Gear on older models of the Infinity 4000™ can become misaligned. This is a potentially serious condition that can, over time, cause damage to the gear that can be costly to repair. The gear can, however, be adjusted easily and quickly. **Figures 1 & 2** are two examples of Double Dog Gears that have come out of alignment.

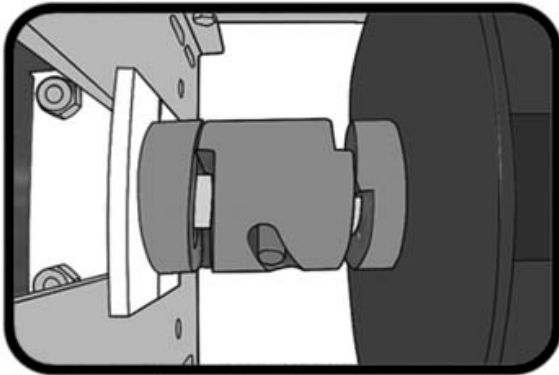


Fig. 1

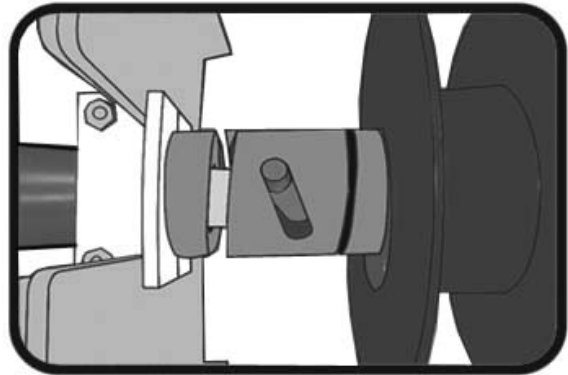


Fig. 2

Step 1: Access the mechanism motor end. Release the front (*pool-side*) and back Motor Mounting Brackets (*the two nearest the motor only*), either by loosening the bolt or removing the screw, depending upon the application. (**Fig. 3**) **NOTE: If necessary, use a rope and small board to tie the motor and keep it level during the procedure.**

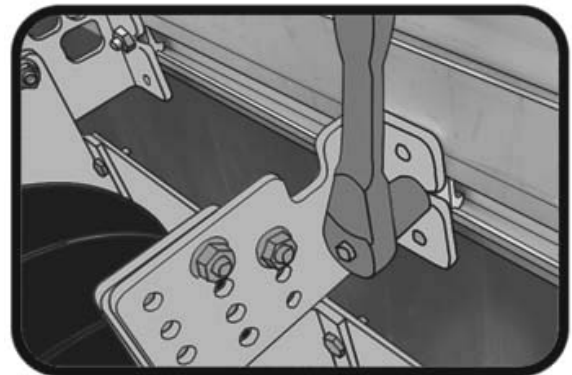


Fig. 3

Step 2: Use a wrench to loosen the four bolts (*2 front; 2 back*) located directly below the Motor Mounting Brackets. (**Fig. 4**) Side to side adjustments can now be made to the mechanism motor end.

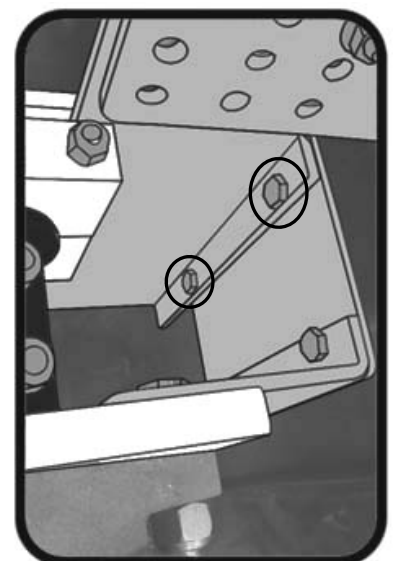


Fig. 4

Step 3: Operate the motor to engage the Double Dog Gear on the side closest to the mechanism tube. Lightly strike the Motor Mounting Brackets with a rubber mallet pressing them toward the tube. A slight movement should be enough. **(Fig. 5)**

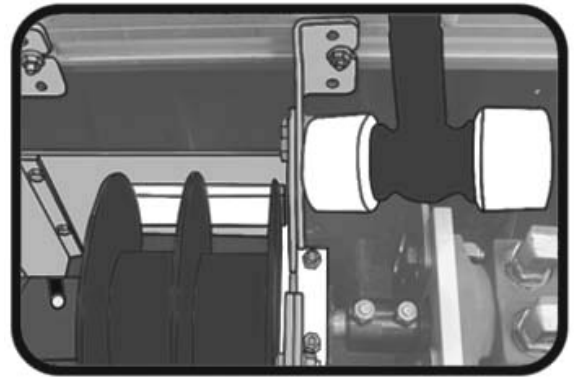


Fig. 5

Step 4: Run the motor to engage the Double Dog Gear on the opposite side (*the side nearest the Rope Reel*). The Gear should push the mechanism into its correct. Watch for a clean and tight engagement. **Fig. 6**, below, shows a correctly engaged Double Dog.

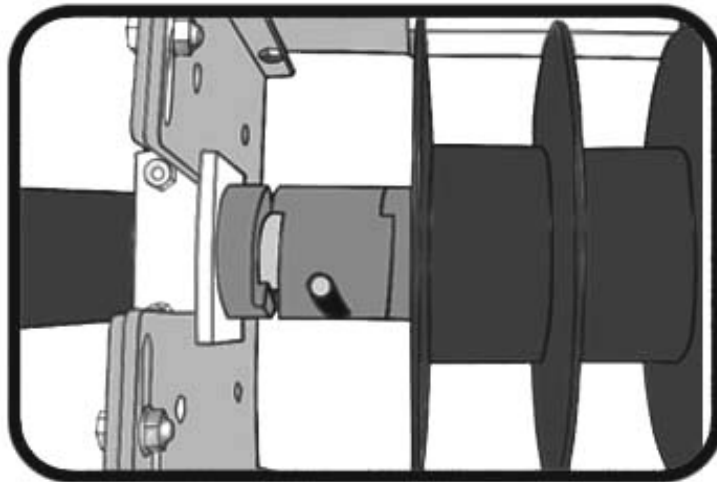


Fig. 6

Step 5: Level the mechanism. A balanced and level Infinity 4000™ will be less likely to come out of alignment. With the unit balanced and the gear engaged, secure any bolts that have been loosened. Test the unit by operating the cover back and forth several times.