

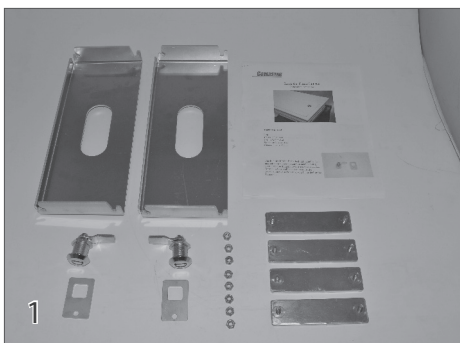
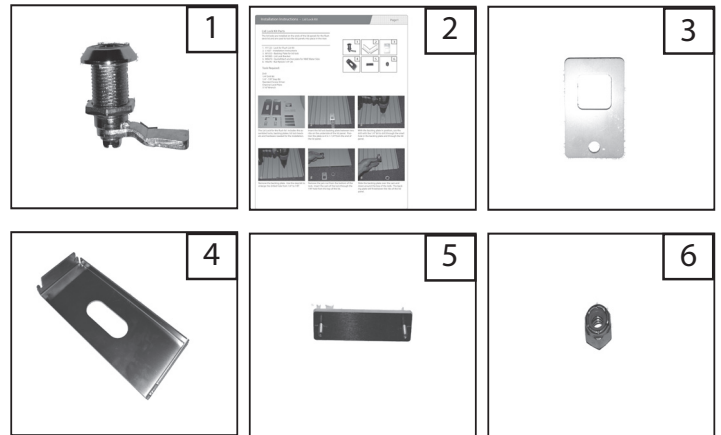
## Lid Lock Kit Parts

The lid locks are installed on the ends of the lid panels for the flush deck lid and are used to lock the lid panels into place in the riser.

1. H1122 - Lock for Flush Lid Kit
2. L1627 - Installation Instructions
3. M1033 - Backing Plate for lid lock
4. M3385 - Lid Lock Bracket
5. A3460 - QuickAttach anchor plate for NME Water Side
6. H0276 - Nut Nylock 1/4"-20

### Tools Required:

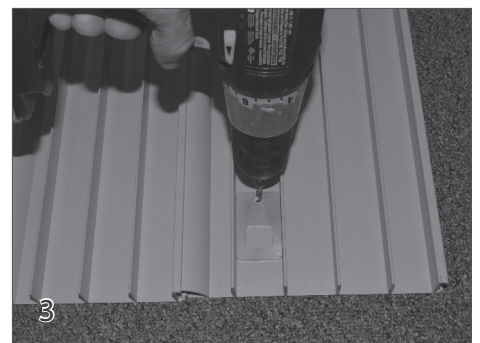
- Drill
- 1/4" Drill Bit
- 1/4" - 7/8" Step Bit
- Standard Screw Driver
- Channel Lock Pliers
- 7/16" Wrench



The Lid Lock Kit for the flush deck lid includes the assembled locks, backing plates, lid lock brackets and hardware needed to complete the installation of the lid locks.



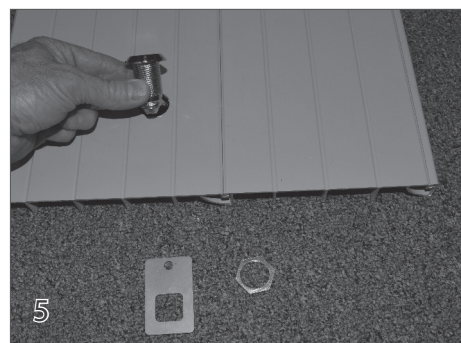
Insert the lid lock backing plate between two ribs on the underside of the lid panel. Position the plate so it is 1-1/4" from the end of the lid panel.



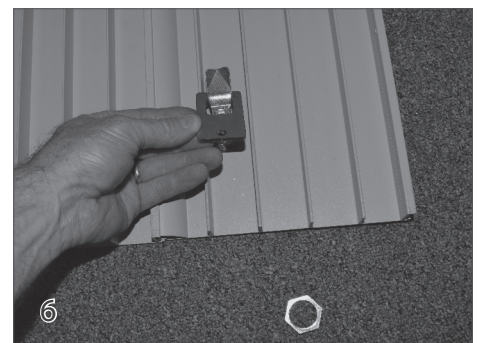
With the backing plate in position, use a drill with a 1/4" drill bit to drill through the small hole in the backing plate and through the lid panel.



Remove the backing plate. Use the step bit to enlarge the drilled hole from 1/4" to 7/8". Repeat drilling the holes on the other end of the lid.



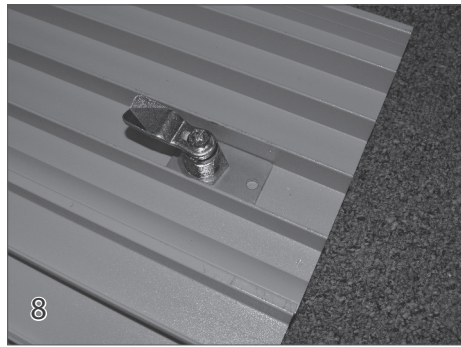
Turn the lid panels over. Remove the jam nut from the bottom of the lock. Insert the cam of the lock through the 7/8" hole from the top of the lid.



Slide the backing plate over the cam and down around the body of the lock. The backing plate will fit between the ribs of the lid panel.



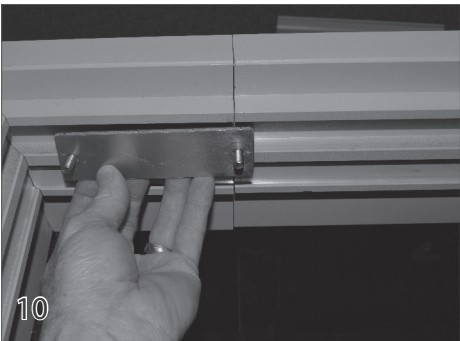
7  
Slide the jam nut over the cam. Use channel lock pliers to tighten the jam nut down around the threads of the body so it is tight against the backing plate.



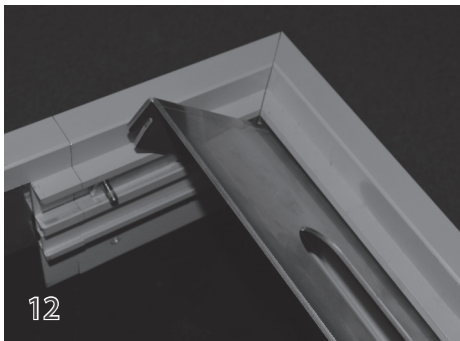
8  
Repeat the same installation steps to install the second lock on the other end of the lid panels. Make sure the locks point toward the center of the lid when in the locked position.



9  
Insert the QuickAttach anchor plate into the top channel on the inside of the riser, on the front side of the cover box.



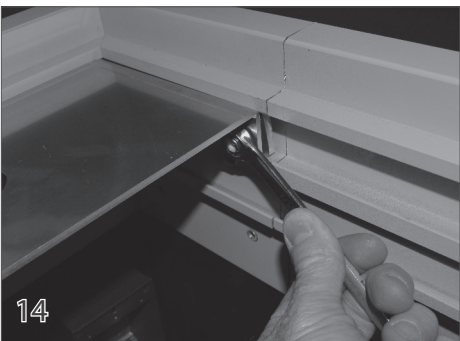
10  
Insert a second QuickAttach anchor plate in the top channel of the riser on the back side of the cover box. Repeat inserting anchor plates on the opposite side of the cover box.



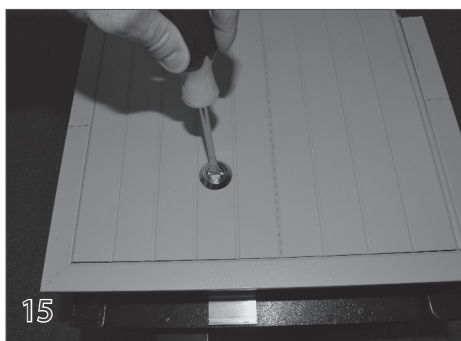
12  
Insert the lid lock bracket at an angle so the slots on the back side of the bracket will slide over the pem studs in the anchor plates.



13  
Lower the lid lock bracket so the slots on the front side of the bracket slide over the remaining pem studs in the anchor plates.



14  
Insert the 1/4 -20 Nylock Nuts over each of the pem studs in the anchor plates. Use a 7/16" wrench to tighten the nylock nuts. Repeat installing the anchor plates and the lid lock bracket on the opposite side of the cover box.



15  
Position the fully assembled lid panels in the flush deck riser. Use a standard screw driver to twist the lid locks, which will position the lock cam in the slot of the lid lock bracket. This will lock the lid into riser.



16  
The installation of the lid lock kit is now complete.